

NET GATEWAY SPHERE

BASIC FEATURES

Mail Gateway

Mail Gateway examines all the incoming and outgoing emails and thus protects your company data. The emails are checked by two main modules: **Antivirus** and **Antispam**, both of these can also be used separately.

Web Gateway

Web Gateway was completely rebuilt and optimized for higher performance. It consists of two parts: an **Antivirus** and **Web Filter** module. The new Google Safe Browsing module checks visited web pages, thus protecting users in internal networks from visiting dangerous websites containing phishing and malware. It not only scans the actual website, but also other downloaded documents. Web Gateway also allows authentication of users and the setting of rules for their access to web servers. It is also able to recognize websites whose purpose is to obtain private data.

New GUI

The new graphical user interface gives administrators clearer summary and it enables them to change settings in a much simpler way. The Setting's Guide enables the user to change the basic configuration and to switch off any unnecessary parts of the application. Thus saves system resources for running other applications.

- Protects your network against viruses
- Blocks fraudulent websites
- Verifies the identity of the user
- Stops unwanted web browsing
- Removes spam
- Backs up emails
- Monitors streams
- Saves expenses



TOP BENEFITS

- Antivirus and antispymware
- Integrated Web Filter
- Advanced antispam
- Advanced antiphishing database
- Traffic statistics
- Remote administration
- Google Safe Browsing
- New user interface
- New TrustPort Antivirus core

ADVANCED PROTECTION

Online threats should not be addressed at the end station, but already at the entry point of the network. This means related problems are removed only once, not separately on each computer. Robustness of the solution enables parallel processing of large amounts of incoming and outgoing data.

EMAIL AND WEB ANTIVIRUS

Up to four antivirus scanning engines ensure monitoring of all email and web traffic. Their combination provides detection capability close to the magical border of a hundred per cent. The administrator has a wide variety of engine settings at their disposal.

MULTILEVEL ANTISPAM

Most spam is detected by the program even before the email is received. This reduces the amount of downloaded data which would later be discarded. Spam detection has a number of levels, including scanning of message headers, application of regular rules or heuristic analysis of the message.

FILTERING OF VISITED WEB PAGES

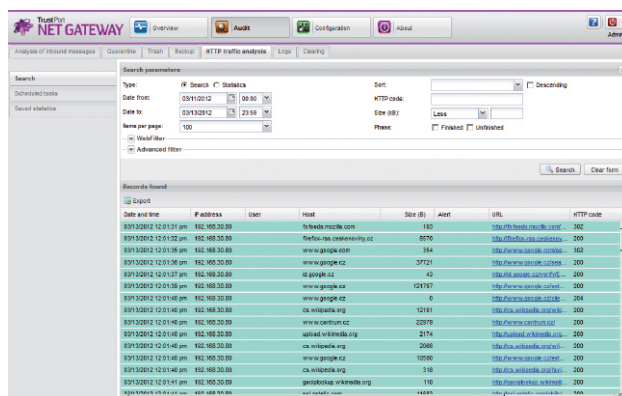
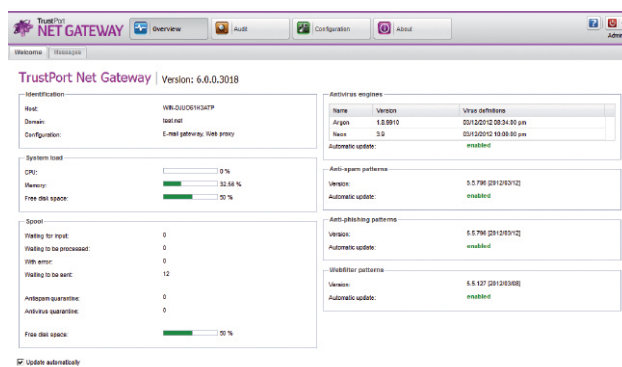
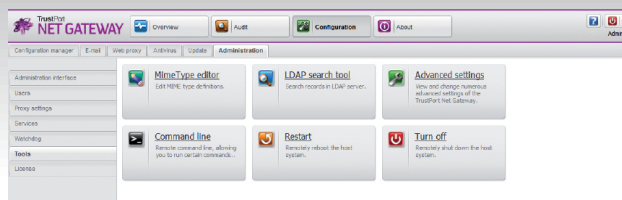
For better connectivity, it is possible to monitor and direct all the web traffic within the network. The network administrator has the option to block website categories which are undesirable in terms of the company policy, for example pages containing pornography or gambling.

TRAFFIC STATISTICS

The software keeps a record of all the events that occur with email and web traffic. From these records, the administrator can generate an overview of all statistics, which can help them decide the overall network security policy.

MODULAR SOLUTION

The software consists of an antivirus, antispam and a filtering module. Customers can either purchase all of the modules, or only the modules that they require for their network traffic. If the network is flooded by large quantities of spam, they should choose the antispam module, when facing malware the antivirus module should be chosen.



RECOMMENDED SYSTEM REQUIREMENTS

- 2 GHz
- 4 GB operation memory
- 20 GB free space on the disk

MINIMUM BROWSER REQUIREMENTS

- Internet Explorer version 7.0 or higher
- Mozilla Firefox version 2.0 or higher
- Google Chrome version 3.0 or higher
- Opera version 9 or higher
- Safari version 3 or higher

SUPPORTED OPERATING SYSTEMS

- Microsoft Windows Server 2016
- Microsoft Windows Server 2012
- Microsoft Windows Server 2008
- Microsoft Windows Server 2003

LANGUAGES

- English
- Czech